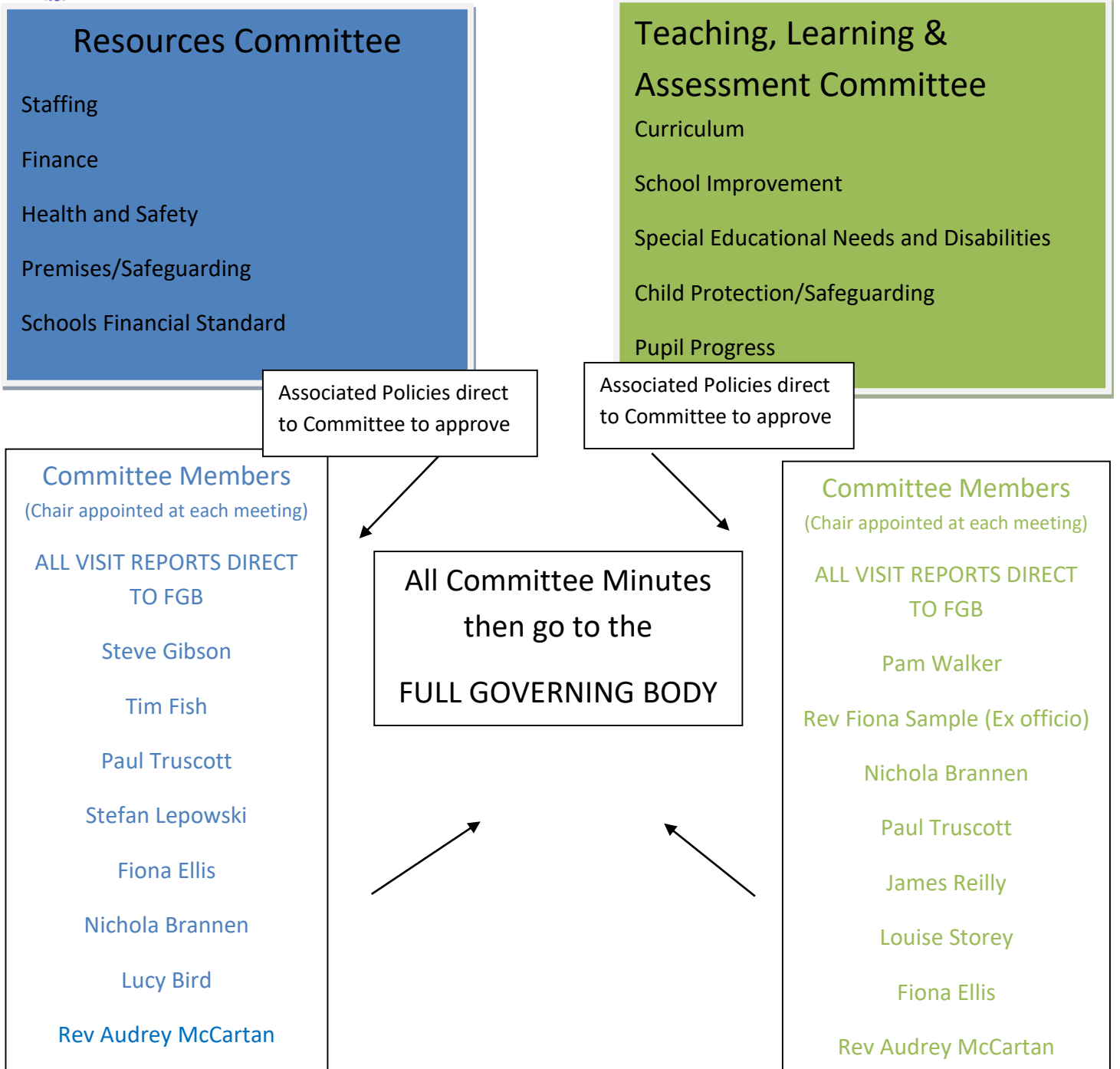




The Federation of Longhorsley and Whalton C of E Schools

Governor Committee Structure for September 2021-22



Committee 3 - Appeals, Complaints, Admissions, Pupil Exclusions

The Chair to choose three members of the governing body when the need arises. For appeals, the number of Governors has to be equal to or greater than the committee taking the original decision. They must be quite separate from those involved in making the original decision

Committee 4 - Head teacher Appraisal – Paul Truscott & Steve Gibson

Governor responsibilities: under review but currently: Safeguarding/Child Protection – P.Truscott, SEND/Looked after Children - Vacancy, Health and Safety – T.Fish, E-Safety – P.Walker, PSHE– Rev. Sample.